

# gen4-ESP32Q-43 Series



gen4-ESP32Q-43 (Non-touch)

gen4-ESP32Q-43T (Resistive touch)

gen4-ESP32Q-43CT (Capacitive touch)

gen4-ESP32Q-43CT-CLB (Capacitive touch w/ CLB)

## Datasheet

Revision 1.1

Copyright © 2025 4D Systems

Content may change at any time. Please refer to the resource centre for latest documentation.

# Contents

---

1. Description	4
2. Features	6
3. Hardware Overview	7
4. Hardware Interface - Pins	9
4.1. Serial Ports - 3.3V TTL Level	9
4.2. I2C Port - 3.3V TTL Level	9
4.3. SPI Port - 3.3V TTL Level	9
4.4. General Purpose I/O	9
4.5. System Pins	14
4.6. Accessing Other GPIO Pins - Hardware Mods Required	15
5. Module Features	16
5.1. ESP32-S3R8 Processor	16
5.2. Chipsets used	16
5.3. SD/SDHC Memory Cards	17
5.4. microSD Socket Usage	18
5.5. FAT16 vs FAT32	19
6. Display/Module Precautions	20
7. Hardware Tools	21
7.1. 4D-UPA	21
7.2. USB-C Cable	23
8. Workshop4 IDE	24
8.1. Tools available inside the Workshop IDE	24
9. Programming Language	25
10. Display Module Part Numbers	25
11. Cover Lens Bezel - Tape Spec	26
12. FFC Cable	26
13. Starter Kit	27

14. Mechanical Details	28
14.1. Non-Touch, Resistive and Capacitive	28
14.2. Capacitive w/ CLB	29
15. Schematic Circuit Details	30
16. Specifications	31
17. Revision History	33
18. Legal Notice	34
18.1. Proprietary Information	34
18.2. Disclaimer of Warranties & Limitations of Liabilities	34

## 1. Description

The gen4-ESP32Q-43 Series of Intelligent Display Modules, is designed and manufactured by 4D Systems.

These 4.3-inch display modules are available features a QSPI Interface between the ESP32-S3R8 Processor, and the TFT LCD Displays. The 4.3" displays are IPS TFT LCDs.

Available in Non-Touch, Resistive Touch, Capacitive Touch, and Capacitive Touch with Cover Lens Bezel (CLB).

The ESP32-S3R8 Processor makes available multiple GPIO which include UART, SPI, I2C, PWM and Analog functionality, while also serving interfaces for the LCD Touch screen, Quad SPI Flash, microSD Card, and Native USB-C.

The user interface to the gen4-ESP32 series is a 30-pin FPC/ZIF socket, designed for a 30-way 0.5mm pitch FFC cable, for easy and simple connection to an application or motherboard, or for connecting to accessory boards for a range of functionality advancements.

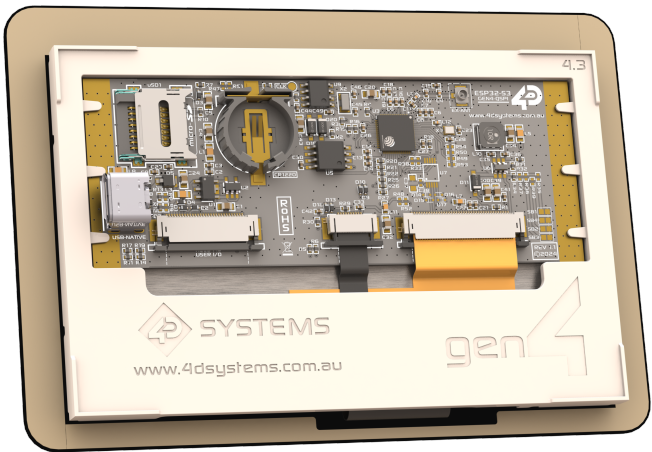
This series of boards is compatible with the 4D Systems Workshop4 IDE, utilising the Espressif compiler and 4D Systems purpose built libraries, allowing a feature rich design and programming experience.

Any code designed and written to run on other 4D Systems display modules, such as modules featuring Goldelox, Picaso, Pixxi or Diablo16 Graphics Processors, are unfortunately not compatible with the gen4-ESP32 range due to being a totally different processor family. However, please contact 4D Systems Support Team for assistance if you are planning on migrating from a different 4D Systems display model, as there are some similarities between them - such as the graphics, however a majority of the coding will have to be adapted.

From a mechanical perspective, these gen4-ESP32 modules are physically the same mounting size as other gen4 products by 4D Systems. The only difference is the circuitry used. Overall thickness of these gen4-ESP32 modules are greater than other gen4 products, due to the USB-C connector and coin cell battery holder for the RTC. Typically, where ever a different gen4 module had been mounted, a gen4-ESP32 module could fit in the same location.



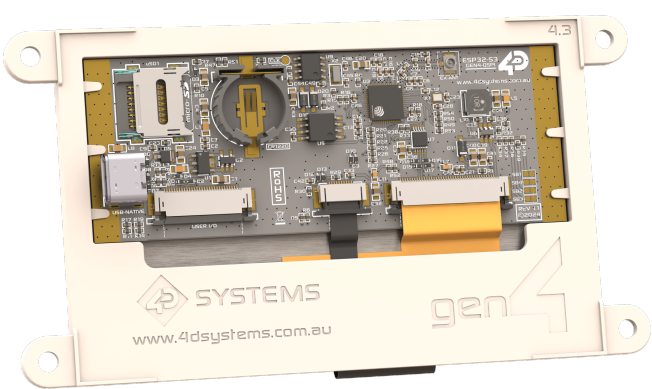
gen4-ESP32Q-43CT-CLB Front



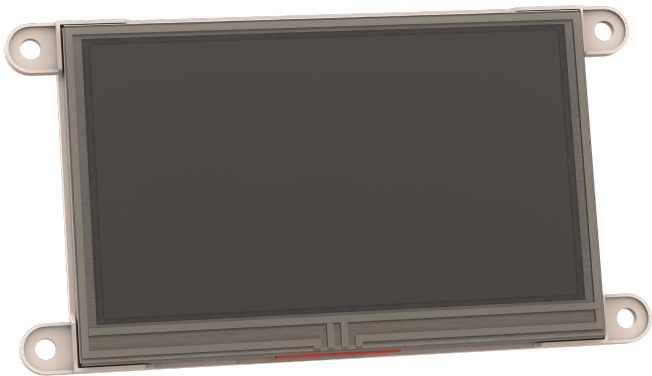
gen4-ESP32Q-43CT-CLB Rear



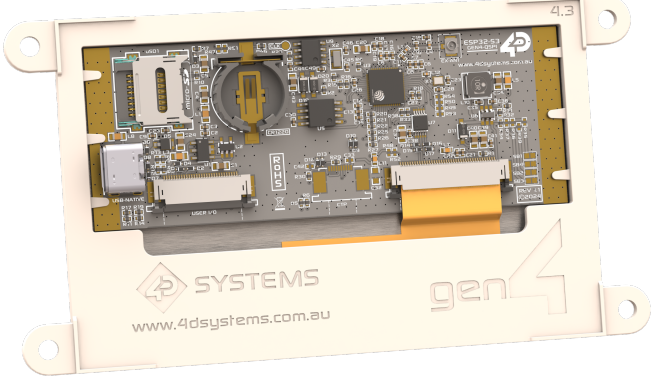
gen4-ESP32Q-43CT Front



gen4-ESP32Q-43CT Rear



gen4-ESP32Q-43T Front

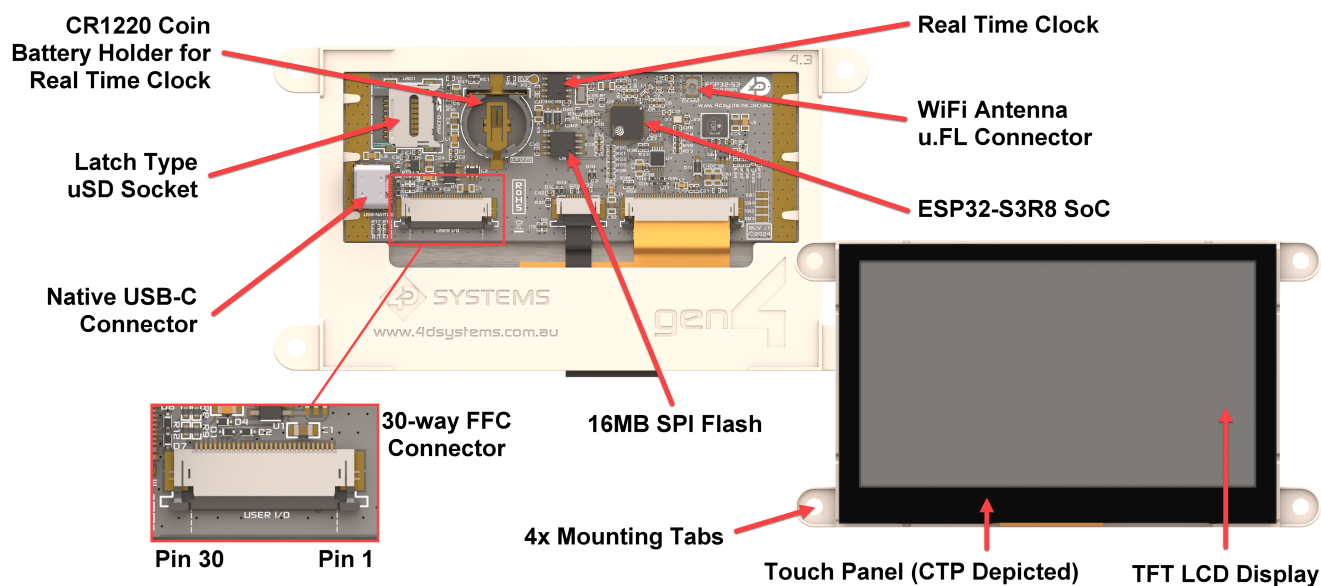


gen4-ESP32Q-43T Rear

## 2. Features

- Powerful ESP32 Graphics Processor by Espressif.
- 480x272 resolution IPS displays for 4.3" utilising RGB-565 colours.
- Available in non-Touch, Resistive Touch, Capacitive Touch, and Capacitive Touch with Cover Lens Bezel (CLB).
- 16MB of External Quad SPI Flash.
- 8MB of Internal Octal SPI PSRAM.
- Up to 17 GPIO of which
  - Capable of SPI (2 Channels), I2C (2 Channels), UART (3 Channels), Digital Input/Output, Analog Input (2 Channels) and other ESP32-S3 supported IO functions.
  - 2 GPIO dedicated to Native USB-C functionality (GPIO19/20) unless that is hardware disabled, it is then available as GPIO.
  - 1 GPIO available after boot (GPIO0), strapping pin.
  - 2 GPIO available if the UART is not required (GPIO43/44)
- Serial UART (GPIO43/44), and up to 3 more UART's available by utilising available GPIO.
- On-board Real Time Clock with battery backup (CR1220) - *battery not included*
- 30pin FPC connection, for all signals, power, communications, GPIO and UART programming.
- Push/Pull micro-SD memory card connector for multimedia storage and data logging purposes.
- Display full colour images, animations, icons and video clips.
- 4.0V to 6.0V range operation (single supply).
- 4x mounting tabs with 3.2mm holes for mechanical mounting using M3 screws (non CLB models only).
- 3M Adhesive around perimeter of Cover Lens Bezel for mounting the CTP-CLB model.
- RoHS and REACH compliant.
- CE/EMC and UKCA compliance pending.
- PCB is UL 94V-0 Flammability Rated.
- Module dimensions:
  - Non-Touch: 127.6 x 69.3 x 11.8mm
  - Resistive Touch: 127.6 x 69.3 x 12.9mm
  - Capacitive Touch: 127.6 x 69.3 x 13.2mm
  - Capacitive Touch w/ CLB: 123.0 x 84.5 x 13.5mm
- Weighing (approximately):
  - Non-Touch: ~ 72g
  - Resistive Touch: ~ 85g
  - Capacitive Touch: ~ 89g
  - Capacitive Touch w/ CLB: ~ 93g

### 3. Hardware Overview



Hardware Layout (4.3" QSPI CTP Module depicted)

Pin	Symbol	I/O	Description
1	GND	P	Supply Ground
2	I2C-SDA	I/O	Dedicated I2C pin as its also used internally, SDA - 3.3V logic. This module is Master (GPIO17)
3	I2C-SCL	I/O	Dedicated I2C pin as its also used internally, SCL - 3.3V logic. This module is Master (GPIO18)
4	GPIO1	I/O/A	General Purpose Input/Output pin capable of Analog, 3.3V logic
5	GPIO14	I/O/A	General Purpose Input/Output pin capable of Analog, 3.3V logic
6	GPIO15	I/O/A	General Purpose Input/Output pin capable of Analog, 3.3V logic
7	GPIO16	I/O/A	General Purpose Input/Output pin capable of Analog, 3.3V logic
8	GPIO21	I/O	General Purpose Input/Output pin, 3.3V logic
9	GPIO38	I/O	General Purpose Input/Output pin, 3.3V logic
10	GPIO39	I/O	General Purpose Input/Output pin, 3.3V logic
11	GPIO40	I/O	General Purpose Input/Output pin, 3.3V logic
12	GPIO45	I/O	General Purpose Input/Output pin, 3.3V logic
13	GPIO46	I/O	General Purpose Input/Output pin, 3.3V logic
14	GPIO47	I/O	General Purpose Input/Output pin, 3.3V logic
15	GPIO48	I/O	General Purpose Input/Output pin, 3.3V logic
16	GPIO20*	I/O/A	N/C unless hardware mod, then General Purpose Input/Output pin capable of Analog, 3.3V logic
17	GPIO19*	I/O/A	N/C unless hardware mod, then General Purpose Input/Output pin capable of Analog, 3.3V logic
18	NC	-	Not Connected
19	GPIO0	I/O	Available after boot, GPIO0 is used for Programming and Boot Strapping. General Purpose Input/Output, 3.3V logic

Pin	Symbol	I/O	Description
20	3.3V	P	3.3V Output for User, connected to system 3.3V bus. Excessive draw will affect system stability. 100mA-200mA draw is OK
21	GND	P	Supply Ground
22	EN-RST	I	Master Reset/Enable signal. Internally pulled up to 3.3V via a 10K resistor. Low will disable the chip, High will activate the chip. Used by a UART programmer for programming sequence.
23	U0RXD	I	Asynchronous Serial Receive pin, 3.3V TTL level. Connect this pin to the Transmit (Tx) signal of other serial devices. Used in conjunction with the U0TXD pin for UART programming or communications. This pin is 3.3V Logic only. (GPIO44)
24	U0TX0	O	Asynchronous Serial Transmit pin, 3.3V TTL level. Connect this pin to the Receive (Rx) signal of other serial devices. Used in conjunction with the U0RXD pin for UART programming or communications. This pin is 3.3V Logic only. (GPIO43)
25	GND	P	Supply Ground
26	5V IN	P	Main Voltage Supply +ve input pin. Reverse polarity protected. The range is 4.0V to 6.0V, nominal 5.0V.
27	5V IN	P	Main Voltage Supply +ve input pin. Reverse polarity protected. The range is 4.0V to 6.0V, nominal 5.0V.
28	5V IN	P	Main Voltage Supply +ve input pin. Reverse polarity protected. The range is 4.0V to 6.0V, nominal 5.0V.
29	5V IN	P	Main Voltage Supply +ve input pin. Reverse polarity protected. The range is 4.0V to 6.0V, nominal 5.0V.
30	GND	P	Supply Ground

#### Note

1. **I** = Input, **O** = Output, **P** = Power, **A** = Analog Input
2. It is recommended to connect 2 or more 5V IN pins to a stable 5V DC power supply, as well as 2 or more GND pins.
3. Please refer to the [Espressif ESP32-S3 datasheet](#) for specific detail on the capability of the ESP32-S3 GPIO, in conjunction with the schematic of this module.

---

## 4. Hardware Interface – Pins

This section describes in detail the hardware interface pins of the module.

### 4.1. Serial Ports – 3.3V TTL Level

The gen4-ESP32 Series has a single dedicated serial UART, which is broken out to the 30-way FFC connector on this module (Pins 23 and 24). The module is capable of turning the available native GPIO into more serial UART's also, based on the functionality of the ESP32-S3 processor. Please refer to the [ESP32-S3 Espressif Datasheet](#) for more detail.

Depending on which on-board peripherals are used, multiple additional UARTS could be configured on the spare GPIO pins.

The module can be programmed over UART (rather than native USB-C) utilising the U0RXD/U0TXD pins, in conjunction with EN-RST and GPIO0.

### 4.2. I2C Port – 3.3V TTL Level

The gen4-ESP32 Series has 2 pins earmarked as I2C pins (Pins 2 and 3) which have pull-up resistors installed on the PCB, and the pins are available on the 30-way FFC connector, however other GPIO can be used for I2C also instead, just external pull-up resistors will be required. The earmarked pins can be utilised by the User for general purpose I2C devices, or as General Purpose IO and is not shared with any on-board components, so is free to be used as required.

### 4.3. SPI Port – 3.3V TTL Level

The gen4-ESP32 Series has a dedicated SPI port for the micro-SD connector, which is not otherwise accessible to the User on the 30 way FFC connector, but additional SPI buses can be set up using the spare GPIO pins to use as is required by the User.

### 4.4. General Purpose I/O

There are 17 general-purpose Input/Output (GPIO) pins available to the user. Many of these can be configured to be SPI, I2C and UART, amongst other configurations. Please refer to the [Espressif ESP32-S3 datasheet](#) for more specific information.

Pin Name	Digital Input	Digital Output	Analog Read	SPI-2/3	I2C-1/2	I2S	Pulse Counter	PWM-0/1	UART
<b>GPIO1</b>	Yes	Yes	Yes	Yes	Yes	Yes	Yes	Yes	Yes
<b>GPIO14</b>	Yes	Yes	Yes	Yes	Yes	Yes	Yes	Yes	Yes
<b>GPIO15</b>	Yes	Yes	Yes	Yes	Yes	Yes	Yes	Yes	Yes
<b>GPIO16</b>	Yes	Yes	Yes	Yes	Yes	Yes	Yes	Yes	Yes
<b>GPIO21</b>	Yes	Yes		Yes	Yes	Yes	Yes	Yes	Yes
<b>GPIO38</b>	Yes	Yes		Yes	Yes	Yes	Yes	Yes	Yes
<b>GPIO39</b>	Yes	Yes		Yes	Yes	Yes	Yes	Yes	Yes
<b>GPIO40</b>	Yes	Yes		Yes	Yes	Yes	Yes	Yes	Yes
<b>GPIO45</b>	Yes	Yes		Yes	Yes	Yes	Yes	Yes	Yes
<b>GPIO46</b>	Yes	Yes		Yes	Yes	Yes	Yes	Yes	Yes
<b>GPIO47</b>	Yes	Yes		Yes	Yes	Yes	Yes	Yes	Yes
<b>GPIO48</b>	Yes	Yes		Yes	Yes	Yes	Yes	Yes	Yes
<b>GPIO20</b>	Yes**	Yes**	Yes**	Yes**	Yes*	Yes*	Yes*	Yes*	Yes*
<b>GPIO19</b>	Yes**	Yes**	Yes**	Yes**	Yes*	Yes*	Yes*	Yes*	Yes*
<b>GPIO0</b>	Yes	Yes		Yes	Yes	Yes	Yes	Yes	Yes
<b>GPIO44</b>	Yes*	Yes*			Yes*	Yes*			Yes (RX)
<b>GPIO43</b>	Yes*	Yes*			Yes*	Yes*			Yes (TX)
<b>AVAILABLE CHANNELS:</b>	ALL	ALL	2x ADC's	2x SPI Channels	2x I2C Channels	1x I2S Channel	2x Pulse Channels	2x PWM's	2x UART's

#### Note

1. GPIO marked with \* are only available if the hardware is configured to do so, as by default they have other functions
2. GPIO marked with \*\* require hardware modifications to achieve, please refer to the [Hardware Mods section](#) for more detail.
3. There are limited channels of each type of IO, all 17 GPIO's cannot be configured to all be Analog Input, or all 15 GPIO's be configured to be UART's - for example. Most GPIO pins are capable of taking on various configurations however.

Please refer to the [Espressif ESP32-S3 datasheet](#) and [Technical Reference Manual](#) for information on how to configure the GPIO for various functions, such as DI/DO, AO, I2C, UART and SPI, etc.

#### **GPIO1**

General purpose I/O pin, capable of Digital Input and Output, along with Analog Input. This pin is 3.3V tolerant only and 3.3V logic level. Can be configured for additional functionality such as SPI, I2C, UART etc. – please refer to [Arduino-ESP32 documentation](#) or [ESP-IDF documentation](#).

#### **GPIO14**

General purpose I/O pin, capable of Digital Input and Output, along with Analog Input. This pin is 3.3V tolerant only and 3.3V logic level. Can be configured for additional functionality such as SPI, I2C, UART etc. – please refer to [Arduino-ESP32 documentation](#) or [ESP-IDF documentation](#).

#### **GPIO15**

General purpose I/O pin, capable of Digital Input and Output, along with Analog Input. This pin is 3.3V tolerant only and 3.3V logic level. Can be configured for additional functionality such as SPI, I2C, UART etc. – please refer to [Arduino-ESP32 documentation](#) or [ESP-IDF documentation](#).

#### **GPIO16**

General purpose I/O pin, capable of Digital Input and Output, along with Analog Input. This pin is 3.3V tolerant only and 3.3V logic level. Can be configured for additional functionality such as SPI, I2C, UART etc. – please refer to [Arduino-ESP32 documentation](#) or [ESP-IDF documentation](#).

#### **GPIO21**

General purpose I/O pin, capable of Digital Input and Output. This pin is 3.3V tolerant only and 3.3V logic level. Can be configured for additional functionality such as SPI, I2C, UART etc. – please refer to [Arduino-ESP32 documentation](#) or [ESP-IDF documentation](#).

#### **GPIO38**

General purpose I/O pin, capable of Digital Input and Output. This pin is 3.3V tolerant only and 3.3V logic level. Can be configured for additional functionality such as SPI, I2C, UART etc. – please refer to [Arduino-ESP32 documentation](#) or [ESP-IDF documentation](#).

#### **GPIO39**

General purpose I/O pin, capable of Digital Input and Output. This pin is 3.3V tolerant only and 3.3V logic level. Can be configured for additional functionality such as SPI, I2C, UART etc. – please refer to [Arduino-ESP32 documentation](#) or [ESP-IDF documentation](#).

**GPIO40**

General purpose I/O pin, capable of Digital Input and Output. This pin is 3.3V tolerant only and 3.3V logic level. Can be configured for additional functionality such as SPI, I2C, UART etc. – please refer to [Arduino-ESP32 documentation](#) or [ESP-IDF documentation](#).

**GPIO45**

General purpose I/O pin, capable of Digital Input and Output. This pin is 3.3V tolerant only and 3.3V logic level. Can be configured for additional functionality such as SPI, I2C, UART etc. – please refer to [Arduino-ESP32 documentation](#) or [ESP-IDF documentation](#).

**GPIO46**

General purpose I/O pin, capable of Digital Input and Output. This pin is 3.3V tolerant only and 3.3V logic level. Can be configured for additional functionality such as SPI, I2C, UART etc. – please refer to [Arduino-ESP32 documentation](#) or [ESP-IDF documentation](#).

**GPIO47**

General purpose I/O pin, capable of Digital Input and Output. This pin is 3.3V tolerant only and 3.3V logic level. Can be configured for additional functionality such as SPI, I2C, UART etc. – please refer to [Arduino-ESP32 documentation](#) or [ESP-IDF documentation](#).

**GPIO48**

General purpose I/O pin, capable of Digital Input and Output. This pin is 3.3V tolerant only and 3.3V logic level. Can be configured for additional functionality such as SPI, I2C, UART etc. – please refer to [Arduino-ESP32 documentation](#) or [ESP-IDF documentation](#).

**GPIO20**

By default, this pin is not available to the User, and is not hardware connected to the 30-way FFC connector. By default, this pin is used by the native USB-C port (USB D+). This can however be configured to be connected to the 30-way FFC connector if the USB-C port is not required. When modified in hardware (refer to the [Hardware Mods section](#)), this pin is a General Purpose I/O pin and can be utilised for Digital Input and Output, as well as Analog Input, amongst other native functionality. This pin is 3.3V tolerant only and 3.3V logic level.

**GPIO19**

By default, this pin is not available to the User, and is not hardware connected to the 30-way FFC connector. By default, this pin is used by the native USB-C port (USB D-). This can however be configured to be connected to the 30-way FFC connector if the USB-C port is not required. When modified in hardware (refer to the [Hardware Mods section](#)), this pin is a General Purpose I/O pin and can be utilised for Digital Input and Output, as well as Analog Input, amongst other functionality. This pin is 3.3V tolerant only and 3.3V logic level.

**GPIO0**

Available after boot, GPIO0 is used for Programming via UART and for Boot Strapping. It can be used as a standard GPIO pin after boot, and is 3.3V tolerant only and 3.3V logic level. At start up, this pin must be pulled-up or allowed to float taking into account the weak internal pull-up (as is the default of this GPIO), which sets the boot up of the ESP32-S3 to be in SPI mode. This pin must not be pulled down externally during system boot, or the module will not boot correctly. This pin is also used by the UART Programmer (if utilised) which changes the boot mode into Download mode at the appropriate time. It is best to leave this pin unused where possible if it is not fully understood. Please refer to the [Espressif documentation](#) for more detail.

**GPIO43**

GPIO43 is used typically as the primary UART, TX pin. If a UART is not required on this pin, then it can be used for GPIO instead. It is capable of Digital Input and Output only. It is 3.3V tolerant only and 3.3V logic level.

**GPIO44**

GPIO44 is used typically as the primary UART, RX pin. If a UART is not required on this pin, then it can be used for GPIO instead. It is capable of Digital Input and Output only. It is 3.3V tolerant only and 3.3V logic level.

## 4.5. System Pins

### **5V IN (Module Voltage Input):**

Module supply voltage input pins. At least two (however ideally four) of these pins should be connected to a stable supply voltage in the range of 4.0 Volts to 5.5 Volts DC. Nominal operating voltage is 5.0 Volts. Utilising 4 pins shares the current over the FFC cable, which is important for the larger size displays.

### **GND (Module Ground):**

Device ground pins. At least two (ideally four) pins should be connected to the ground.

### **EN-RST (Module Enable/Disable/Reset):**

This pin is connected to a 10K pull-up resistor, which is pulling the module to the enabled state by default. Pulling this pin to 0V will disable the module, and put it into a reset state. Pulling the pin High or floating (due to build in pull-up resistor) will enable the module. This pin is utilised when utilising the UART Programming method.

## 4.6. Accessing Other GPIO Pins - Hardware Mods Required

### GPIO19

GPIO19 by default is USB-D-, part of the USB+/USB- combination for the Native USB-C port.

If there is no desire to utilise the onboard USB-C connector, or an external extension is going to be made utilising the 30-way FFC connector, or the pins are desired to be GPIO, it is possible to achieve with a small hardware modification. In order to access this pin on the 30-way FFC, a resistor needs to be removed (R13) and another needs to be added (R8) or a simple solder blob will suffice in this position.

If this is going to be a required modification for your end-product, and it will be used in a production application, it is possible to request 4D Systems to move this by default when you order the product. Please contact our Sales team with your requirements.

### GPIO20

GPIO20 by default is USB-D+, part of the USB+/USB- combination for the Native USB-C port.

If there is no desire to utilise the onboard USB-C connector, or an external extension is going to be made utilising the 30-way FFC connector, or the pins are desired to be GPIO, it is possible to achieve with a small hardware modification. In order to access this pin on the 30-way FFC, a resistor needs to be removed (R12) and another needs to be added (R9) or a simple solder blob will suffice in this position.

If this is going to be a required modification for your end-product, and it will be used in a production application, it is possible to request 4D Systems to move this by default when you order the product. Please contact our Sales team with your requirements.

## 5. Module Features

The gen4-ESP32 Series is designed to accommodate a wide variety of applications. Some of the main features of the module are listed below.

### 5.1. ESP32-S3R8 Processor

The module is designed around the ESP32-S3R8 Processor from Espressif. This model of ESP32-S3 has 8MB of build in Octal SPI PSRAM, and utilises External Quad SPI Flash for application storage. Media is typically stored on a micro-SD card, however some types of media can be stored in SPI Flash, however it is very limited for capacity.

### 5.2. Chipsets used

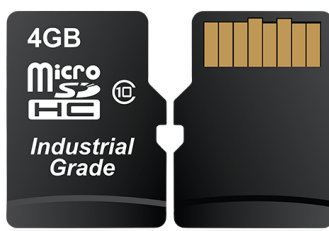
The gen4-ESP32 Series of modules utilises a few chipsets from various manufacturers, in order for these modules to operate. Please refer to the Schematic for connection details.

- The main processor is an Espressif ESP32-S3R8, as mentioned in the previous section.
- For Capacitive Touch models, the chipset for the capacitive touch is I2C driven, and the chipset is found on the Display flex itself.
- The Real Time Clock utilises the NXP PCF8563T/5 real time clock, which is also I2C driven. This is battery backed up with a CR1220 coin cell battery. *Battery is not included.*
- The Quad SPI Flash memory used on these modules, is the Giga-Devices GD25Q127C, which is 16MB in capacity, and interfaces to the ESP32-S3 on the same Octal/Quad SPI bus as the PSRAM which is built into the ESP32-S3R8 chipset itself.
- The micro-SD card interface, while not a chipset, is still worthy of note. It utilises a dedicated 1-bit SPI bus from the ESP32-S3, which can be shared with the User if required. The micro-SD cards used must be SPI compatible due to the interface type - more detail below.

### 5.3. SD/SDHC Memory Cards

The gen4-ESP32 modules use off-the-shelf standard SDHC/SD/microSD memory cards with up to 4GB capacity usable with FAT16 formatting, and much higher with FAT32 formatting. For any FAT file-related operations, before the memory card can be used it must first be formatted. The formatting of the card can be done on any PC system with a card reader.

Cards with a FAT16 formatting (4GB or under partition) are capable of operating faster on this display module, compared to the same card (16GB for example) with a single FAT32 partition, due to the nature of FAT16 vs FAT32 file transfers. If your application media can fit inside a 4GB partition, it is recommended to use FAT16 to gain the maximal speed possible.



RMPET, a 4D Systems Tool found in the Workshop4 IDE, is capable of repartitioning and formatting microSD cards for FAT16, to be the appropriate type and format. This tool should be used for all cards as it also employs an offset which is critical when using Industrial microSD cards which feature Read Disturb Prevention firmware, which is a special firmware inside the microSD card designed to prevent Read Disturb occurring on NAND based Flash media. Further, discussed in the note.

#### Note

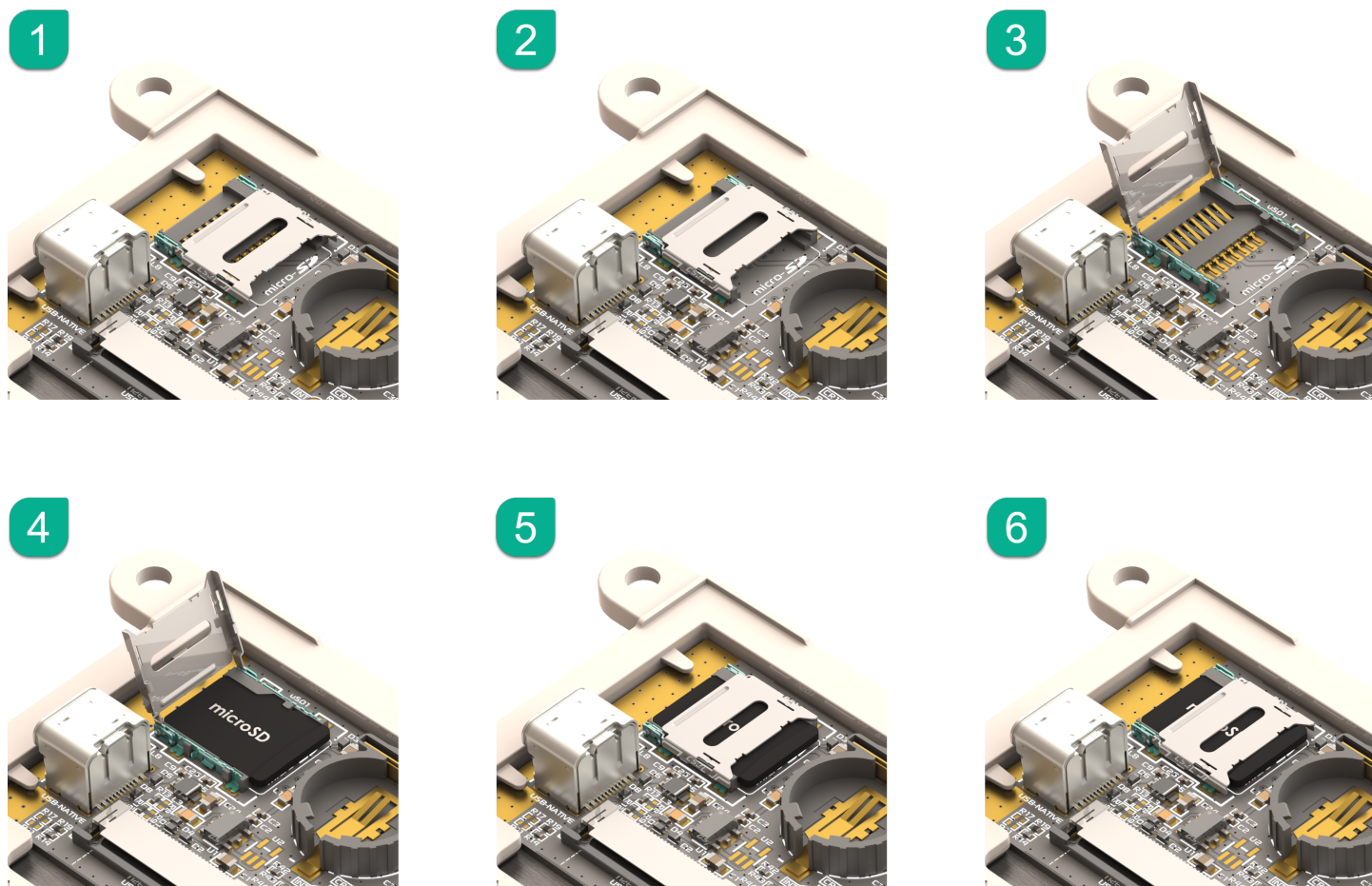
1. An SPI Compatible SDHC/SD/microSD card **MUST** be used. The gen4-ESP32 modules requires SPI mode to communicate with the SD card. If a non-SPI compatible SD card is used, then the processor will not be able to mount the card.
2. Read disturbance is a well-known issue with flash memory devices, such as microSD cards, where reading data from a flash cell can cause the nearby cells in the same memory block to change over time. This issue can be prevented by using industrial-grade microSD cards with read disturb protection. Industrial-grade microSD cards have firmware that actively monitors the read operation and refreshes areas of memory that have high traffic and even move data around to prevent read disturb error from occurring. Furthermore, manufacturers may choose to implement read disturb protection on a specific part of the flash memory only, such that the beginning part of the memory might not be protected. The RMPET utility in Workshop4 is designed to create the first partition at an offset from the start of the microSD card to account for this situation. It is therefore recommended to always partition and format an industrial microSD card using the RMPET utility before using it with 4D Systems modules. Many commercial grade cards designed for Cameras etc, do not handle read disturb well at all, and therefore it is always recommended to use an Industrial grade microSD card with 4D modules. 4D offers one that is tried and tested, on our website.

## 5.4. microSD Socket Usage

On the gen4-ESP32Q-43 modules is a Latch-Type microSD socket. To use this socket is simple if you follow these easy steps.

- Unlock the empty socket by sliding/unlocking the socket towards the edge of the PCB (away from the battery holder).
- Lifting the lid of the socket, and hinging it up off the PCB, towards the edge of the module.
- Placing a microSD card into the socket.
- Lowering the lid of the socket back down, by hinging it down towards the PCB again.
- Locking the socket back in place by sliding/locking the socket towards the battery holder.

Please refer to the following diagram for guidance:



---

## 5.5. FAT16 vs FAT32

FAT16 is capable of having a partition with up to 4GB capacity usable. While this might seem like a limitation, it still offers the best performance for small processor systems such as the ESP32-S3. Larger partitions are possible with FAT32 formatting, however smaller cluster size results, giving slightly worse performance.

For any FAT file-related operations, before the memory card can be used it must first be formatted correctly. Built into Workshop4 is a tool created by 4D, called RMPET (please refer to the Tools menu, in any Environment, inside the Workshop4 IDE). RMPET allows the User to easily partition and format microSD cards, to make their file system ready to be used with 4D Systems modules. The formatting of the card can be done on any Windows PC system with a card reader.

---

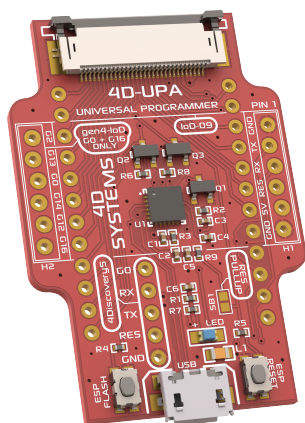
## 6. Display/Module Precautions

- Avoid having to display the same image/object on the screen for lengthy periods. This can cause a burn-in which is a common problem with all types of display technologies. Blank the screen after a while or dim it very low by adjusting the contrast. Better still; implement a screen saver feature.
- Moisture and water can damage the display. Moisture on the surface of a powered display should not cause any problems, however, if water is to enter the display either from the front or from the rear, or come in contact with the PCB, it will damage. Wipe off any moisture gently or let the display dry before usage. If using this display module in an environment where it can get wet, ensure an appropriate enclosure is used.
- Dirt from fingerprint oil and fat can easily stain the surface of the display. Gently wipe off any stains with a soft lint-free cloth.
- The performance of the display will degrade under high temperatures and humidity. Avoid such conditions when storing.
- Do not tamper with the display flex cable that is connected to the control board. This may affect the connection between the display and the driving circuitry and cause failure.
- Displays are susceptible to mechanical shock and any force exerted on the module may result in deformed zebra stripes, a cracked display cell and a broken backlight.
- Always use the mounting holes on the module's to mount the display where possible, or mount using the CLB for CLB based modules.
- Display modules have a finite life, which is typically dictated by the display itself, more specifically the backlight. The backlight contains LEDs, which fade over time. In the [Specifications section](#) is a figure for the typical life of the display, and the criteria are listed. The resistive Touch model features a touch-sensitive film over the display which is sensitive to pressure. When mounting the display module in an enclosure, you should not apply pressure to the surface of the display by the enclosure. It could result in false touches or the touch will simply not function at all.

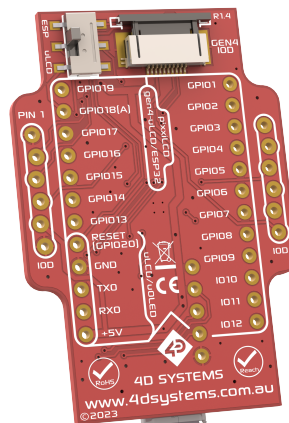
## 7. Hardware Tools

The following hardware tools are required for full control of the gen4-ESP32 Display Modules.

### 7.1. 4D-UPA



*4D-UPA Front*

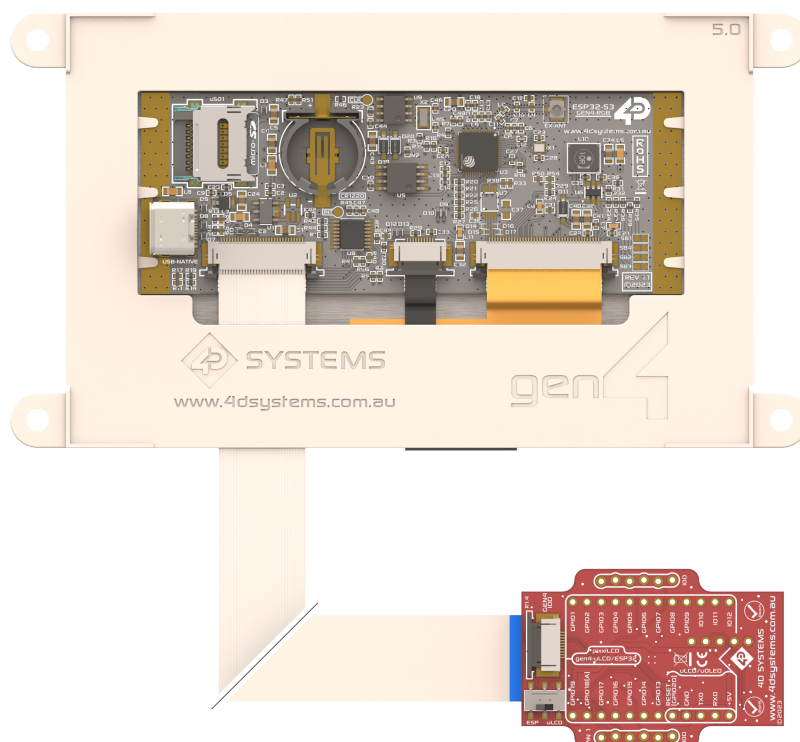


*4D-UPA Back*

The 4D-UPA minimizes the connections and modules required for programming the gen4-ESP32 series via its UART - creating a single module with a micro USB interface, and DIP style pads for GPIO breakout of all the signals used on the gen4 Display interface, which is useful for development or final product use.

The GPIO naming convention on the 4D-UPA does not reflect the GPIO naming of the actual display module, due to the 4D-UPA being universal and able to be used with many 4D Products. Please review the 4D-UPA datasheet for information on mapping the GPIO naming from this module, with the GPIO naming on the 4D-UPA, to ensure you connect to the correct pins you desire.

Typically, a 4D-UPA should not be required for programming the gen4-ESP32 series of modules, as they have USB-C on board, however if problems occur or situations arise that the USB-C is non-functional, then the 4D-UPA would be required, so it is a good tool to have on hand.



The 4D-UPA is connected to the ESP32 module using the supplied 30-way FFC Cable. The connectors on both the ESP32 module, and the 4D-UPA, are Top-Contact, meaning the FFC cable pins should be facing upwards, and the blue stiffener, should be facing down towards the PCB.

#### Note

1. 4D-UPA REV 1.4 or higher is required to program a ESP32 processor via the 30-way interface. Any version earlier than REV 1.4 will not work for programming ESP32 based products. Please be sure to refer to the 4D-UPA Datasheet.
2. If using the 4D-UPA, only the supplied FFC cable (or same type) can be used. The type of cable supplied, as described in the **FFC Cable** section, is an Opposite type (contacts on opposite sides to each other at end end). If a straight cable (contacts on the same side at both ends) is sourced, this will NOT work when connecting to the 4D-UPA, as the connections will be swapped. Please refer to the information provided for more detail.

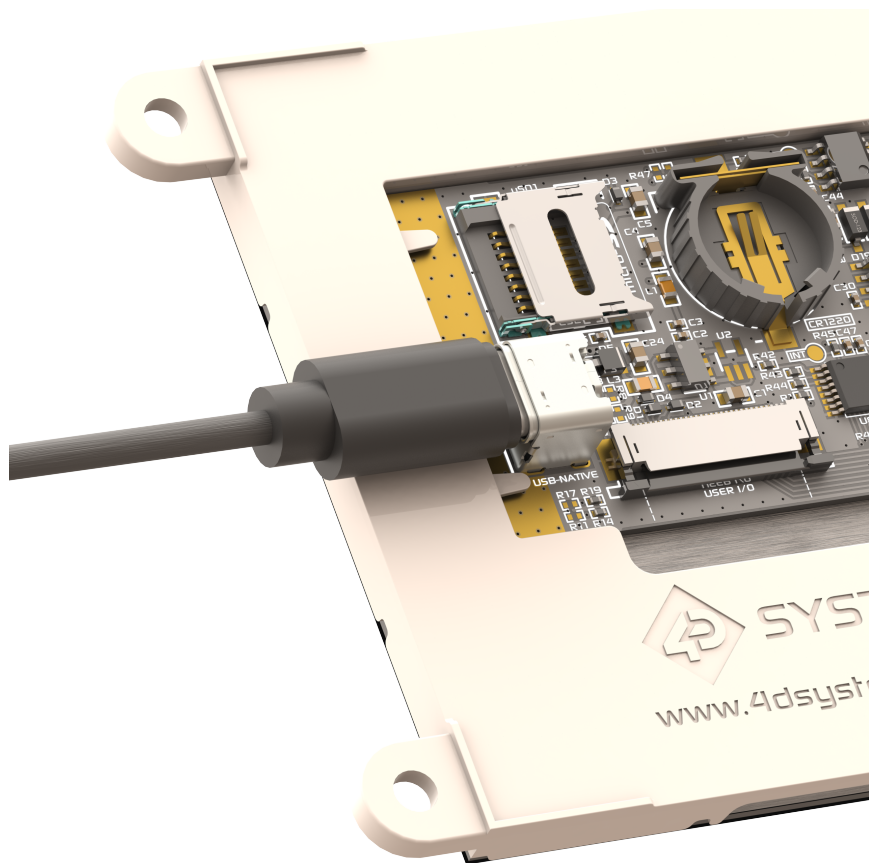
## 7.2. USB-C Cable

A USB-C Cable is the primary way to program a gen4-ESP32 module from 4D Systems, aside from using a 4D-UPA, as described previously.

A USB-C cable is not supplied with the modules, as they can be sourced from any computer or hardware store, and come with most Cell Phones these days too.

Connection of the USB-C cable to the module is simple, and simply plugs into the USB-C connector on the board, clearing the gen4 plastics on the side.

The USB-C provides power as well as USB Data communications, for while developing software on the module and programming it. The USB-C cable can be used in the end product use if desired, or the use of the FFC-Cable directly to the projects main Application PCB as an alternative.



*USB-C Connection*

## 8. Workshop4 IDE

Workshop4 is a comprehensive software IDE that provides an integrated software development platform for all the 4D family of processors and modules, as well as some 3rd party processors such as the Espressif ESP32.

The IDE provides an Editor and WYSIWYG design area for gen4-ESP32 based modules, to develop complete application code with various widgets and media references as required. All user application code is developed within the Workshop4 IDE, and is easily coupled with graphics and media, so is a one-stop shop for development with these modules.

The Workshop4 IDE utilises the Arduino IDE 2.x CLI to handle the compiling, linking and downloading of ESP32 based projects, using the ESP32 Arduino Core and associated libraries, without having to interface with the Arduino IDE at all.

### Note

Arduino IDE 2.x and Arduino CLI is not included when installing Workshop4 and must be installed separately. For complete development setup instructions, please refer to the [Workshop4 ESP32 Development Manual](#)

### 8.1. Tools available inside the Workshop IDE

Built into Workshop4 are a number of tools which are available to aid the programming of the gen4-ESP32 series of displays.

**Terminal**, as the name implies, is a terminal application that can be used to communicate with the display module and is primarily used for basic debugging. It displays incoming Serial messages from the display module in ASCII and HEX format. It is capable of sending character or hex strings as well as keystrokes to the display.

**RMPET** is a partitioning and formatting tool, used to correctly set up a micro-SD card for use with 4D Systems products. This is further discussed in the [SD/SDHC Memory Cards section](#)

## 9. Programming Language

The programming language used in the Workshop4 IDE to program the gen4-ESP32 series of modules, is C++, which is the same as native Arduino IDE written code.

The Arduino programming language is a user-friendly coding system tailored for Arduino microcontrollers. It simplifies microcontroller coding, bridging the gap between users and hardware. Its approachability and community support make it ideal for various projects.

## 10. Display Module Part Numbers

The following is a breakdown of the part numbers and what they mean.

### Example:

- gen4-ESP32Q-43T
- gen4-ESP32Q-43CT-CLB

### Example Starter Kits

- SK-gen4-ESP32Q-43T
- SK-gen4-ESP32Q-43CT-CLB

where:

```
SK - Starter Kit (kitting of multiple parts)
gen4 - gen4 Display Range
ESP32 - ESP32 Display Family
Q - QSPI display module
43 - Display size (4.3")
T - Resistive Touch
CT - Capacitive Touch
CLB - Cover Lens Bezel
```

### Note

- The SK at the start denotes it's a Starter Kit, and the rest of the part number describes the display module in the Starter Kit.
- A product without a T or CT in the part number is a non-touch variant.
- Cover Lens Bezels (CLB) are glass fronts for the display module with overhanging edges, which allow the display module to be mounted directly into a panel using special adhesive on the overhanging glass. This is available for capacitive touch only.

## 11. Cover Lens Bezel - Tape Spec

The perimeter of the CLB display modules features double-sided adhesive tape, designed to stick directly onto a panel, enclosure, box etc. without the need for any mounting screws or hardware.

The tape used is 3M 9495LE tape, which uses well-known and strong 3M 300LSE adhesives. The double-sided adhesive has a thickness of 0.17mm once the backing has been removed.

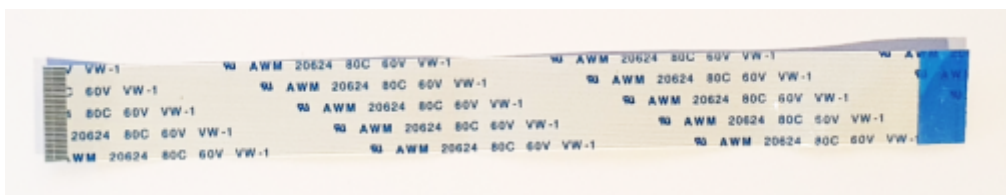
More information on this adhesive can be found on the 3M website.

## 12. FFC Cable

The FFC cables supplied by 4D Systems (included with products) have the following specifications:

- **30 Pin** Flexible Flat Cable, 150mm Long, 0.5mm (0.02") pitch
- Cable Type: AWM 20624 80C 60V VW-1
- Heat Resistance 80 Degrees Celsius
- Connections on the opposite side at each end (Type B)

You can get different cable lengths from the 4D Systems website.



### Note

If you are interfacing with this module directly to your product via the 30-way FFC rather than utilising a breakout board or 4D-UPA, suitable connectors are readily available from many electronics suppliers, such as Digikey, Mouser, Farnell, RS, etc.

A standard 30-pin, 0.5mm pitch, 0.3mm thick FFC, FFC connector. They are available in Top Contact and Bottom Contact, so depending how you orientate the cable on your product, will determine which one you need. Please however take care of the pinout and how it flows from the display module, through the FFC and into your product, to ensure Pin1 and Pin30 are where you expect them to be.

---

## 13. Starter Kit

4D Systems highly recommends all first-time buyers of 4D Systems' displays, to purchase the Starter Kit when purchasing their first 4D Systems display solution.

The Starter Kit provides all the hardware that is required to get the User up and running.

### **Starter Kits typically include:**

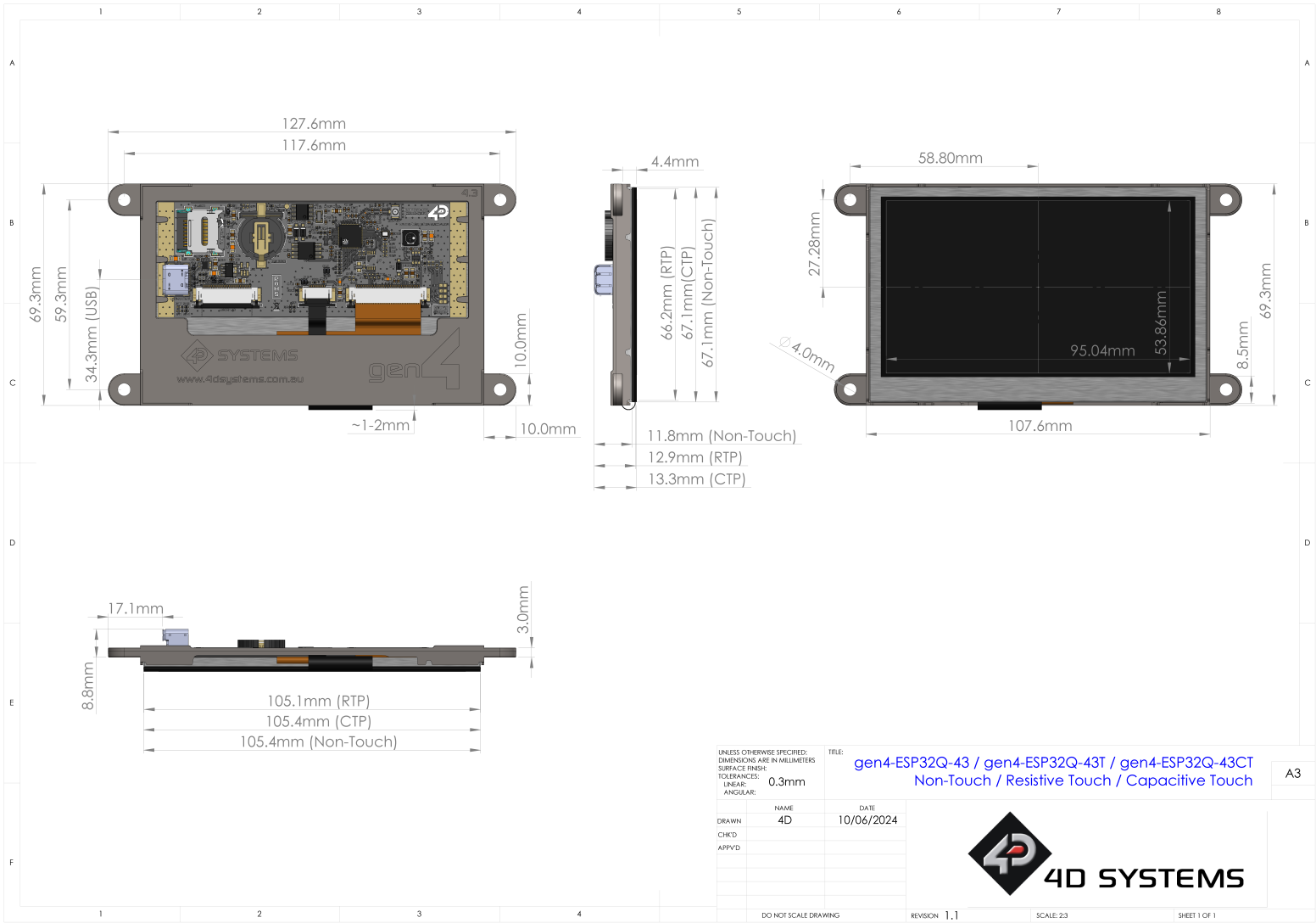
- gen4 ESP32 Display Module
- gen4 Breakout Board (gen4-Breakout)
- 4D Universal Programming Adaptor (4D-UPA REV1.4 or higher)
- 4GB micro-SD Card
- 150mm 30-way FFC cable for connecting display to gen4-Breakout, 4D-UPA, or Users System
- Wi-Fi Antenna (u.FL to SMA, and screw on SMA antenna)

Please refer to the [4D Systems website](#) for the current components included in the Starter Kit.

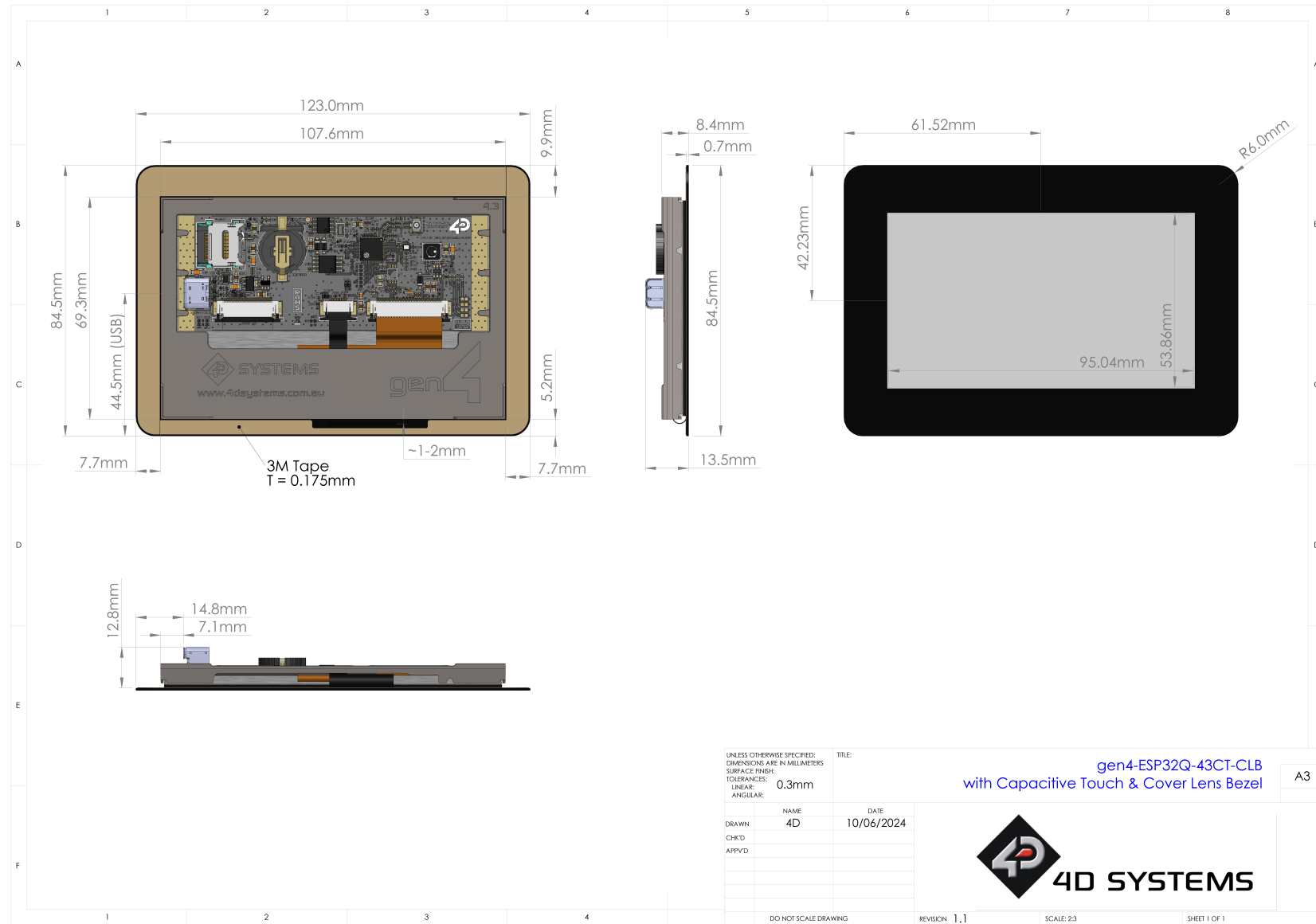
Simply select the Starter Kit option when purchasing the chosen display module on the 4D Systems shopping cart, or from your local distributor.

14. Mechanical Details

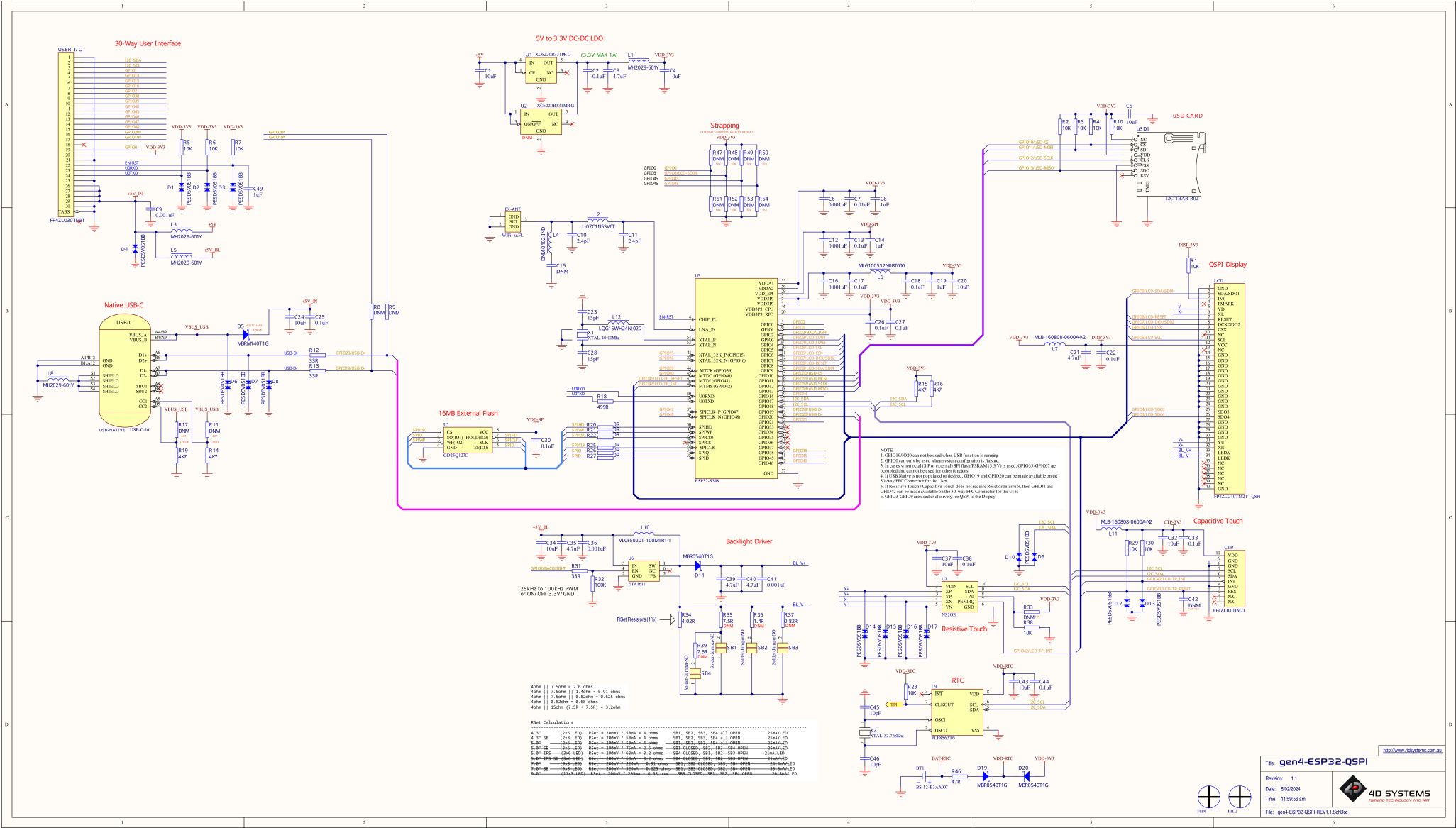
14.1. Non-Touch, Resistive and Capacitive



## 14.2. Capacitive w/ CLB



15. Schematic Circuit Details



16. Specifications

Absolute Maximum Ratings	
Operating ambient temperature	-20°C to +65°C (see note 1 and 2)
Storage temperature	-30°C to +80°C
Voltage on any digital input pin (ESP32) with respect to GND	-0.3V to 3.6V
Voltage on any digital input pin (IO Expander) with respect to GND	-0.3V to 6.0V
Voltage on VCC with respect to GND	-0.3V to 6.5V

Note

1. Quote Espressif

"Ambient temperature specifies the recommended temperature range of the environment immediately outside an Espressif chip. For ESP32-S3R8 if the PSRAM ECC function is enabled, the maximum ambient temperature can be improved to 85°C, while the usable size of PSRAM will be reduced by 1/16"

2. Temperature range for Ambient and Storage, are determined by a combination of components used on these modules. While some components may be capable of exceeding these temperatures, some are not, so the minimums/maximums are determined by the weakest device on the modules. Based on the 65°C/85°C note above, if the ESP32-S3R8 is increased to 85°C capability, the next 'weakest' component on the module is the TFT LCD, which is capable of -20°C to 70°C Operating Temp.

3. Stresses above those listed here may cause permanent damage to the device. This is for stress rating only and functional operation of the device at those or any other conditions above those indicated in the recommended operation listings of this specification is not implied. Exposure to maximum rating conditions for extended periods may affect device reliability.

Recommended Operating Conditions					
Parameter	Conditions	Min	Typ	Max	Units
Supply Voltage (VCC)	Stable external supply required	4.0	5.0	6.0	V
Processor voltage (VP)		—	3.3	—	V
Input Low Voltage (VIL)	all pins	0	—	0.25VP	V
Input High Voltage (VIH)	all pins	0.8VP	—	5.5	V

### Global Characteristics Based on Operating Conditions

Parameter	Conditions	Min	Typ	Max	Units
Supply Current (ICC) ***	gen4-ESP32Q-43 (Contrast = 15)	—	149	—	mA
	gen4-ESP32Q-43T (Contrast = 15)	—	150	—	mA
	gen4-ESP32Q-43CT (Contrast = 15)	—	150	—	mA
	gen4-ESP32Q-43CT-CLB (Contrast = 15)	—	150	—	mA
Display Endurance	Hours of operation, measured to when display is 50% original brightness	30000	—	—	H
Touch Screen Transparency	Capacitive Touch	90	—	—	%
CLB Hardness	Cover Lens Bezel Glass Hardness	—	6	—	H

### Note

Typical Supply Current (ICC) figures are without WiFi enabled, without microSD card inserted, and using simple display operations only. Any additional load such as GPIO sourcing, WiFi etc, will increase this figure. This is a Typical figure only, not a Maximum.

### LCD DISPLAY INFORMATION (IPS DISPLAY)

Parameter	Conditions	Specification
Display Type		IPS - TFT Transmissive LCD
Display Size		4.3" Diagonal
Display Resolution		480 x 272 (Landscape/Wide Viewing)
Display Brightness	gen4-ESP32Q-43 (Contrast = 15)	600 cd/m2
	gen4-ESP32Q-43T (Contrast = 15)	510 cd/m2
	gen4-ESP32Q-43CT (Contrast = 15)	540 cd/m2
	gen4-ESP32Q-43CT-CLB (Contrast = 15)	540 cd/m2
Display Contrast Ratio	Typical	800:1
Display Viewing Angles	Above Centre	80 Degrees
	Below Centre	80 Degrees
	Left of Centre	80 Degrees
	Right of Centre	80 Degrees
Display Viewing Direction		ALL (wide viewing IPS Display)
Display Backlighting	gen4-uLCD-43Dxx-xxx Models	2x5 Parallel LED's
	gen4-uLCD-43Dxx-xxx-SB Models	2x8 Parallel LED's
Pixel Pitch		0.198 x 0.198 mm (Square pixels)
Pixel Density	Number of pixels in 1 row in 25.4mm	128 DPI/PPI

### Note

The displays used are of the highest rated 'Grade A', which allows for 0-4 defective pixels. A defective pixel could be solid Black (Dead), White, Red, Green or Blue.

17. Revision History

<div><div></div>Datasheet Revision</div>		
Revision Number	Date	Description
1.0	12/06/2024	Initial Public Release Version
1.1	21/07/2025	Added battery holder information

<div><div></div>Hardware Revision</div>		
Revision Number	Date	Description
1.1	12/06/2024	Initial Public Release Version

## 18. Legal Notice

### 18.1. Proprietary Information

The information contained in this document is the property of 4D Systems Pty. Ltd. and may be the subject of patents pending or granted, and must not be copied or disclosed without prior written permission. 4D Systems endeavours to ensure that the information in this document is correct and fairly stated but does not accept liability for any error or omission. The development of 4D Systems products and services is continuous and published information may not be up to date. It is important to check the current position with 4D Systems. 4D Systems reserves the right to modify, update or make changes to Specifications or written material without prior notice at any time.

All trademarks belong to their respective owners and are recognised and acknowledged.

### 18.2. Disclaimer of Warranties & Limitations of Liabilities

4D Systems makes no warranty, either expressed or implied with respect to any product, and specifically disclaims all other warranties, including, without limitation, warranties for merchantability, non-infringement and fitness for any particular purpose.

Information contained in this publication regarding device applications and the like is provided only for your convenience and may be superseded by updates. It is your responsibility to ensure that your application meets with your specifications.

Images and graphics used throughout this document are for illustrative purposes only. All images and graphics used are possible to be displayed on the 4D Systems range of products, however the quality may vary.

In no event shall 4D Systems be liable to the buyer or to any third party for any indirect, incidental, special, consequential, punitive or exemplary damages (including without limitation lost profits, lost savings, or loss of business opportunity) arising out of or relating to any product or service provided or to be provided by 4D Systems, or the use or inability to use the same, even if 4D Systems has been advised of the possibility of such damages.

4D Systems products are not fault tolerant nor designed, manufactured or intended for use or resale as on line control equipment in hazardous environments requiring fail - safe performance, such as in the operation of nuclear facilities, aircraft navigation or communication systems, air traffic control, direct life support machines or weapons systems in which the failure of the product could lead directly to death, personal injury or severe physical or environmental damage ('High Risk Activities'). 4D Systems and its suppliers specifically disclaim any expressed or implied warranty of fitness for High Risk Activities.

Use of 4D Systems' products and devices in 'High Risk Activities' and in any other application is entirely at the buyer's risk, and the buyer agrees to defend, indemnify and hold harmless 4D Systems from any and all damages, claims, suits, or expenses resulting from such use. No licenses are conveyed, implicitly or otherwise, under any 4D Systems intellectual property rights.