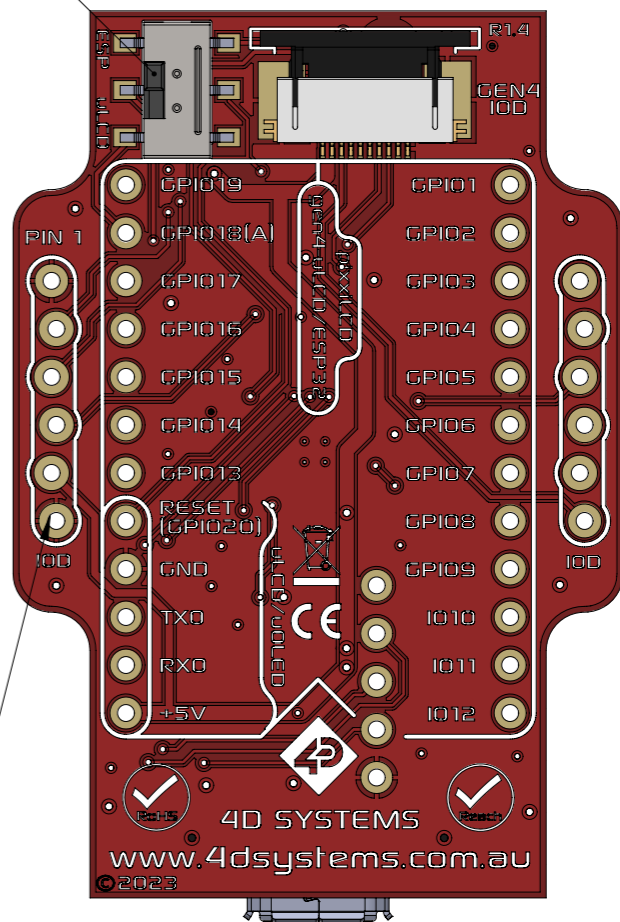


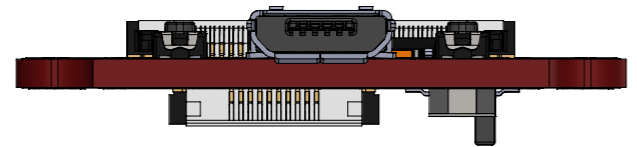
Switch for selecting between uLCD mode and ESP mode.



Pads offset to allow friction fit, without need to solder. loD-09 can fit directly without headers, if required.

Female Headers (For loD-09), come loose in the box, and are to be soldered by the User.
Male Headers are not included.
This allows the customer to decide which headers to solder for their application.

Headers are depicted in the REV 1.3 Drawing - for reference.



UNLESS OTHERWISE SPECIFIED:
DIMENSIONS ARE IN MILLIMETERS
SURFACE FINISH:
TOLERANCES:
LINEAR: 0.3mm
ANGULAR:

TITLE:
4D-UPA - Universal Programming Adaptor

A3

	NAME	DATE
DRAWN	4D	08/08/2023
CHK'D		
APPVD		

